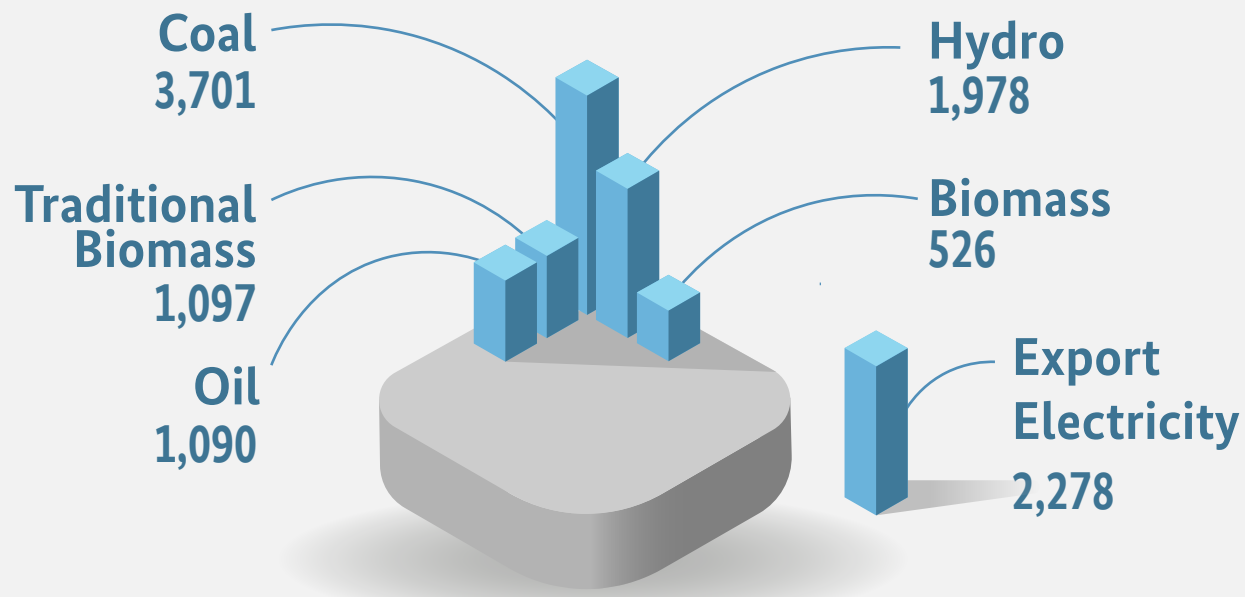
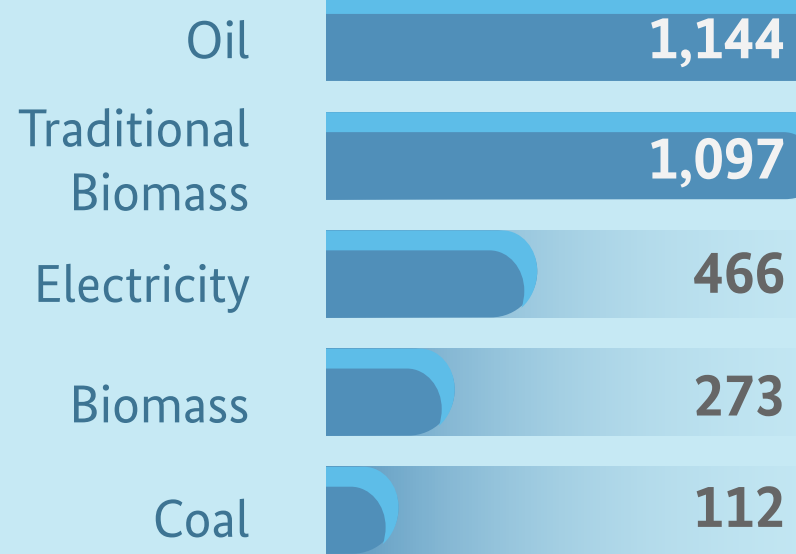


7,123,100 236,800 km<sup>2</sup> ⚡ Electrification Ratio : 94.2 %

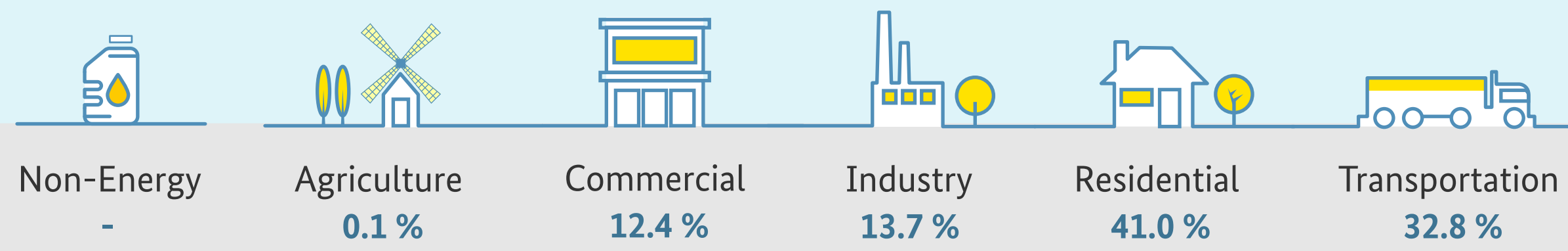
## 2018 Energy Supply 6,114 Ktoe



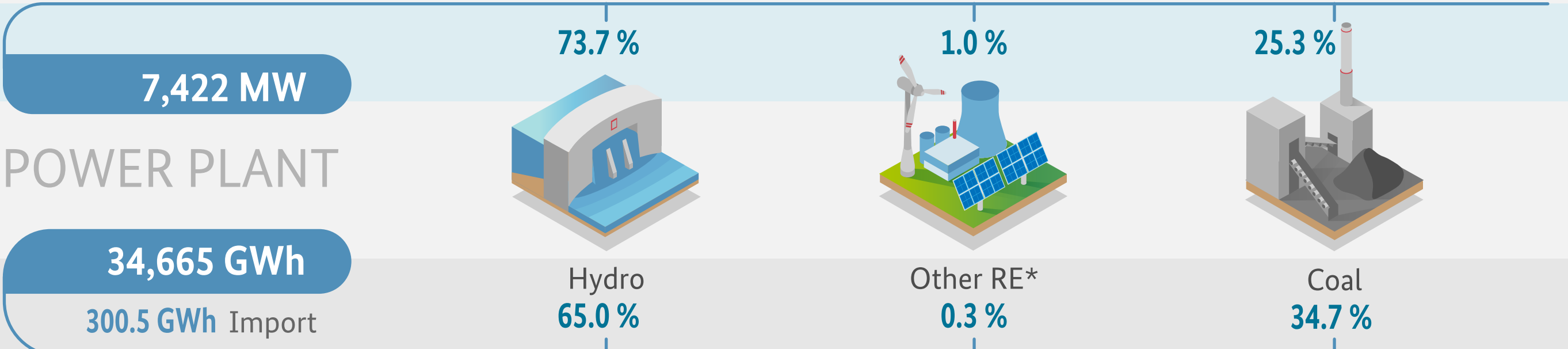
## 2018 Energy Consumption by Fuel



## 2018 Energy Consumption by Sector



## 2018 Installed Capacity



## 2018 Power Generation

\*Other RE : including Bioenergy & Solar PV

Bioenergy = Biomass, Biofuel, Biogas & Waste-to-energy  
GWh = Gigawatt hour  
Ktoe = Kilotonnes of oil equivalent  
MW = Megawatt

Source :  
ASEAN Energy Database System,  
ASEAN Centre for Energy

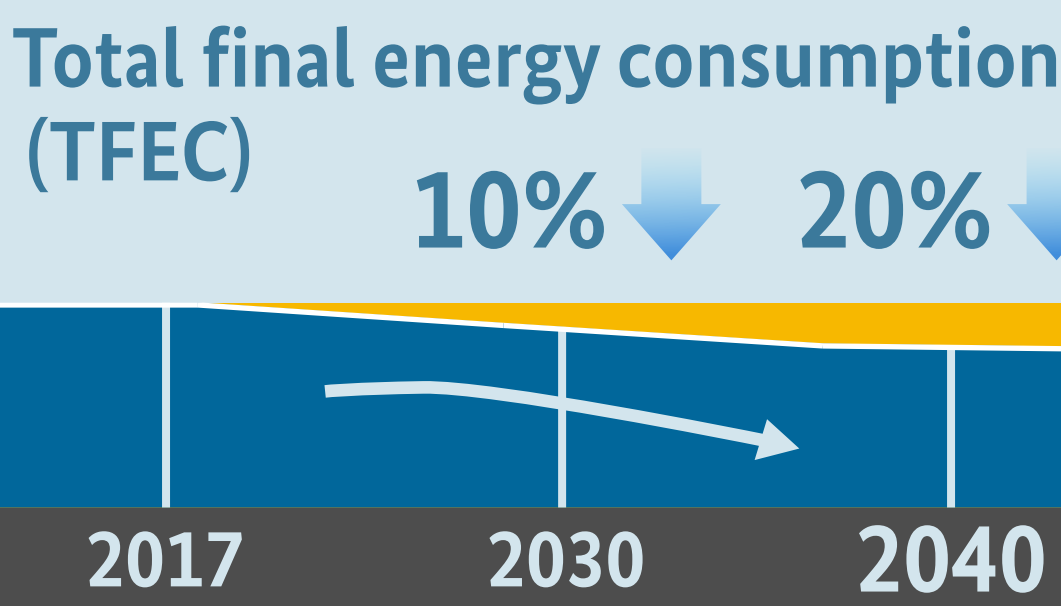


# THE 6<sup>th</sup> ASEAN ENERGY OUTLOOK (AEO6) ANALYSIS

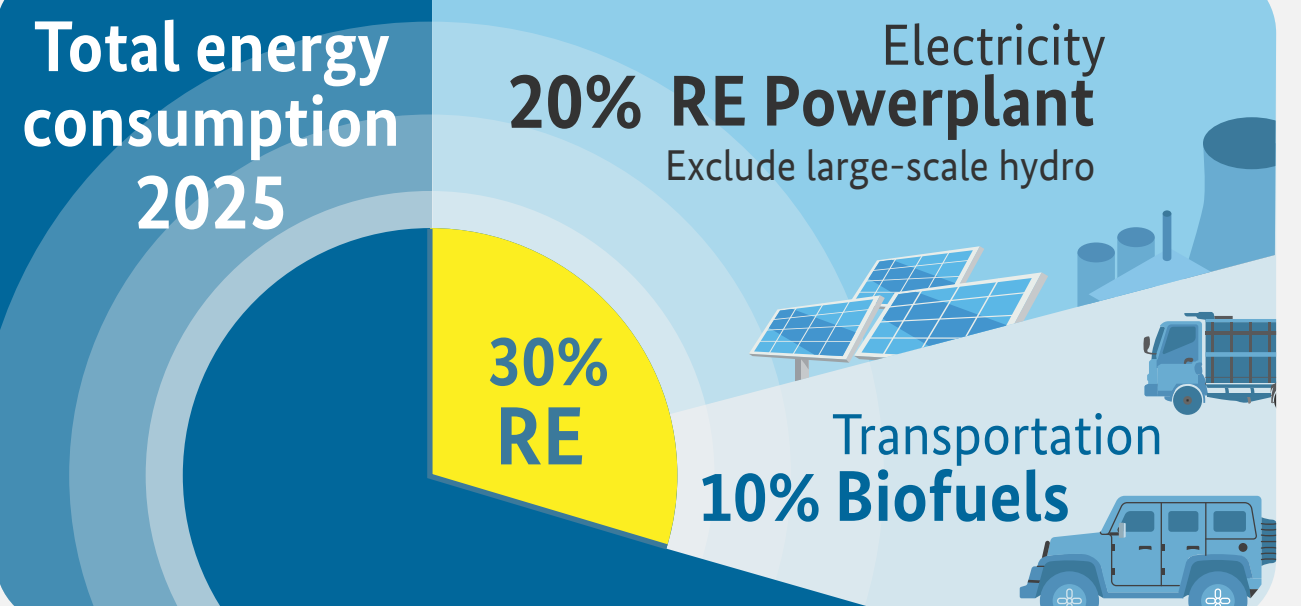
LAO PDR

## AMS Targets Scenario (ATS)

### Energy Efficiency

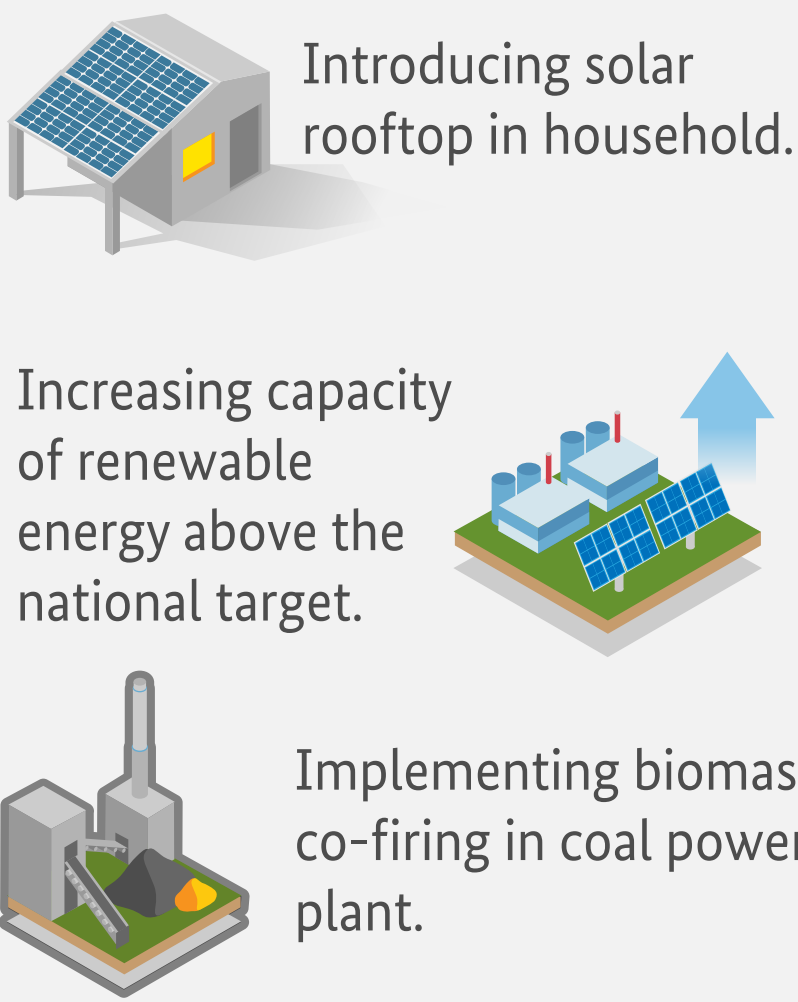


### Renewable Energy

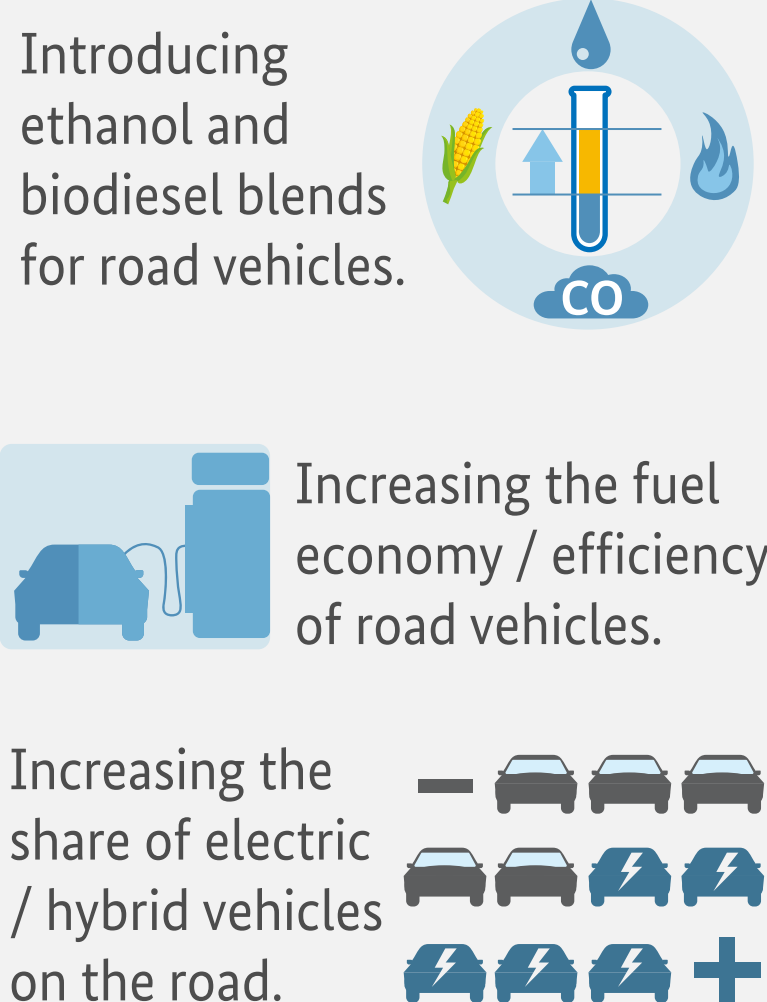


## APAEC Targets Scenario (APS)

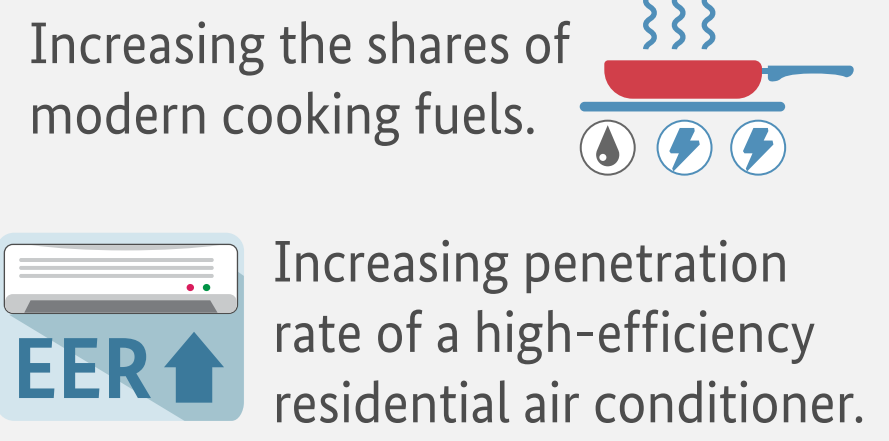
### Power Generation



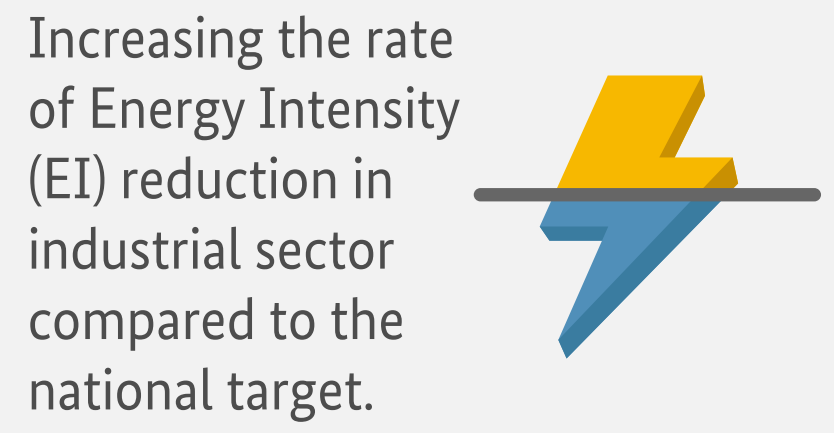
### Transportation



### Residential



### Industrial



AMS = ASEAN Member States  
APAEC = ASEAN Plan of Action for Energy Cooperation  
EER = Energy Efficiency Ratio

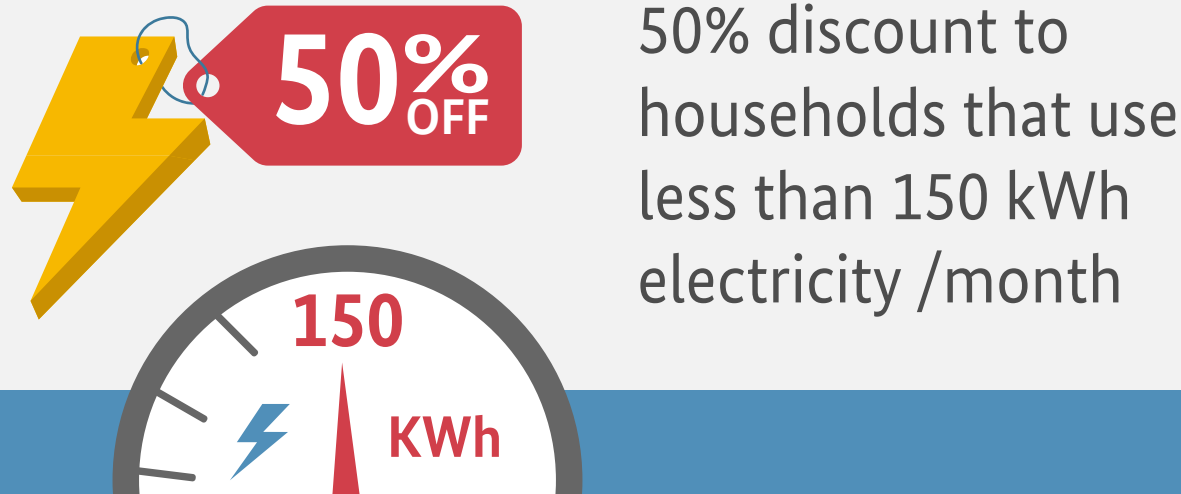
Learn more about AEO here



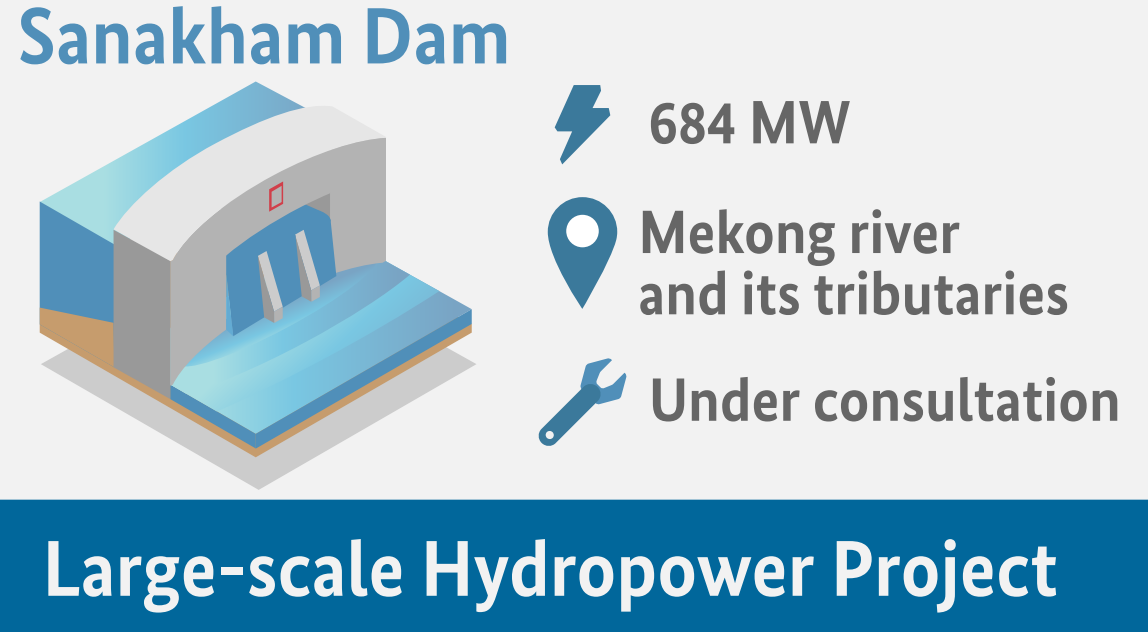
# ACTIVITIES AMIDST COVID-19 PANDEMIC

Collaboration with  
ACCEPT  
ASEAN climate change and Energy Project

## Electricity



## Hydropower



## Electricity Interconnection

