

OVERVIEW

Thailand



★ Bangkok

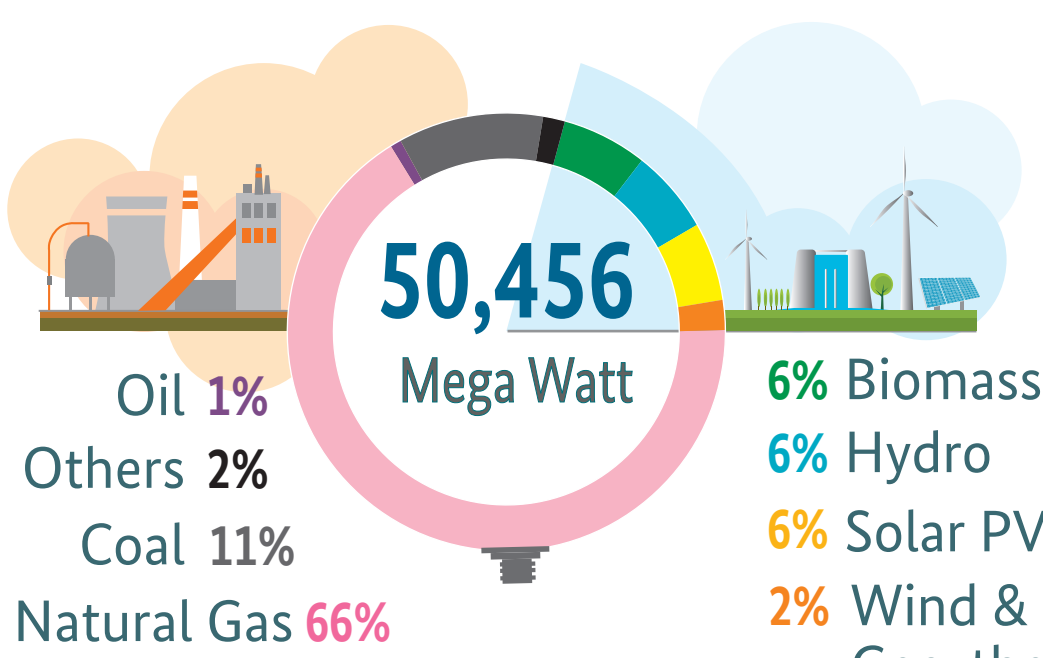
513,140 km²

67,831,600

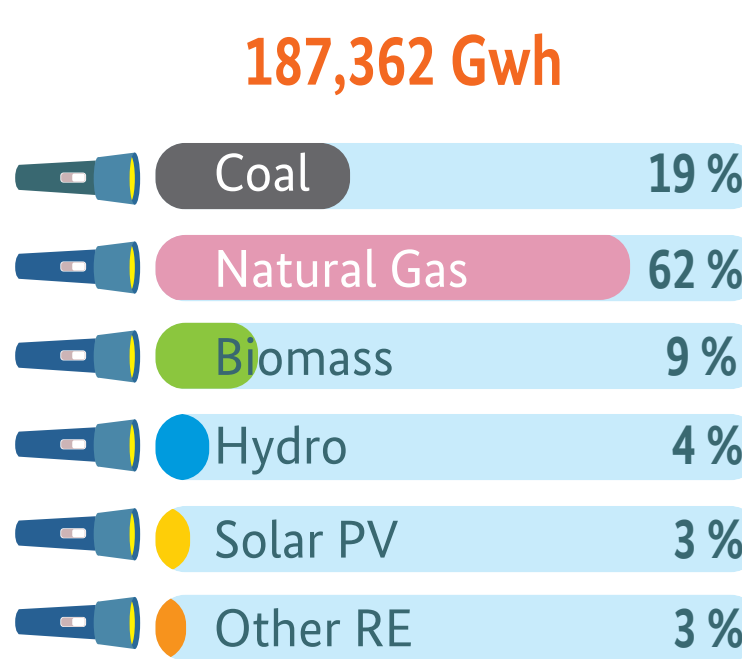
*as of 2019

Electrification
⚡ 100 %

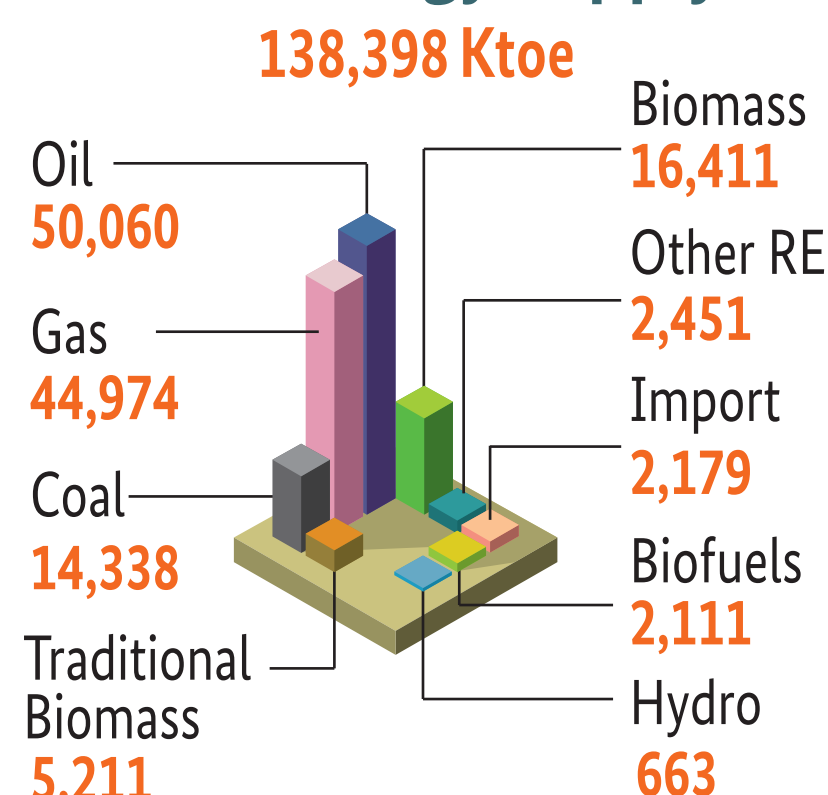
2018 Installed Capacity



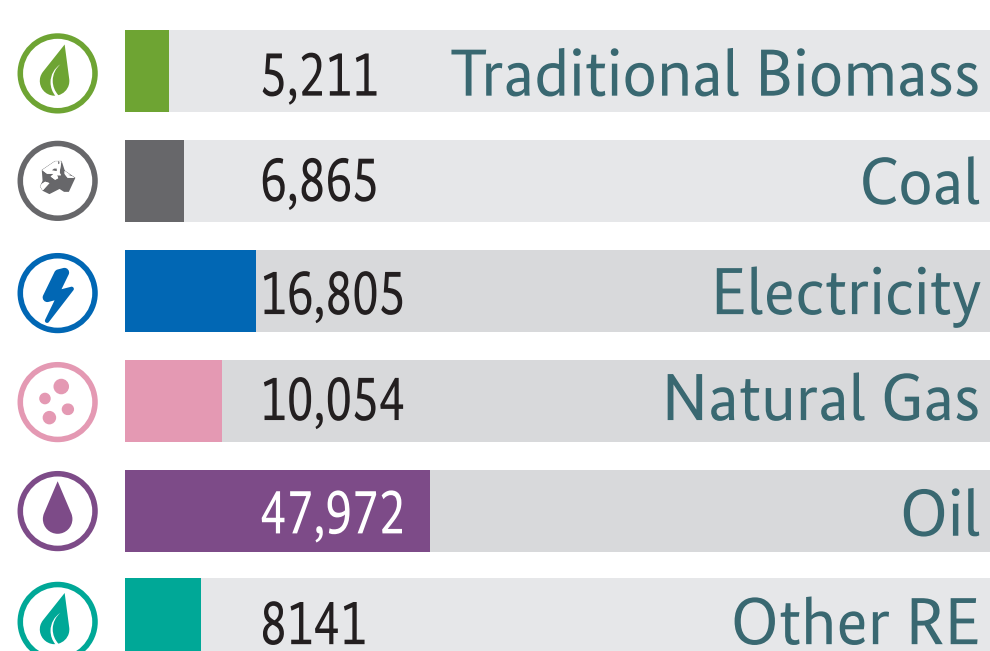
2018 Power Generation



2018 Energy Supply



2018 Final Energy Consumption by Fuel (Ktoe)



Other : 767 Ktoe Ktoe = Kilotonne of Oil Equivalent

2018 Fuel Consumption by Sector

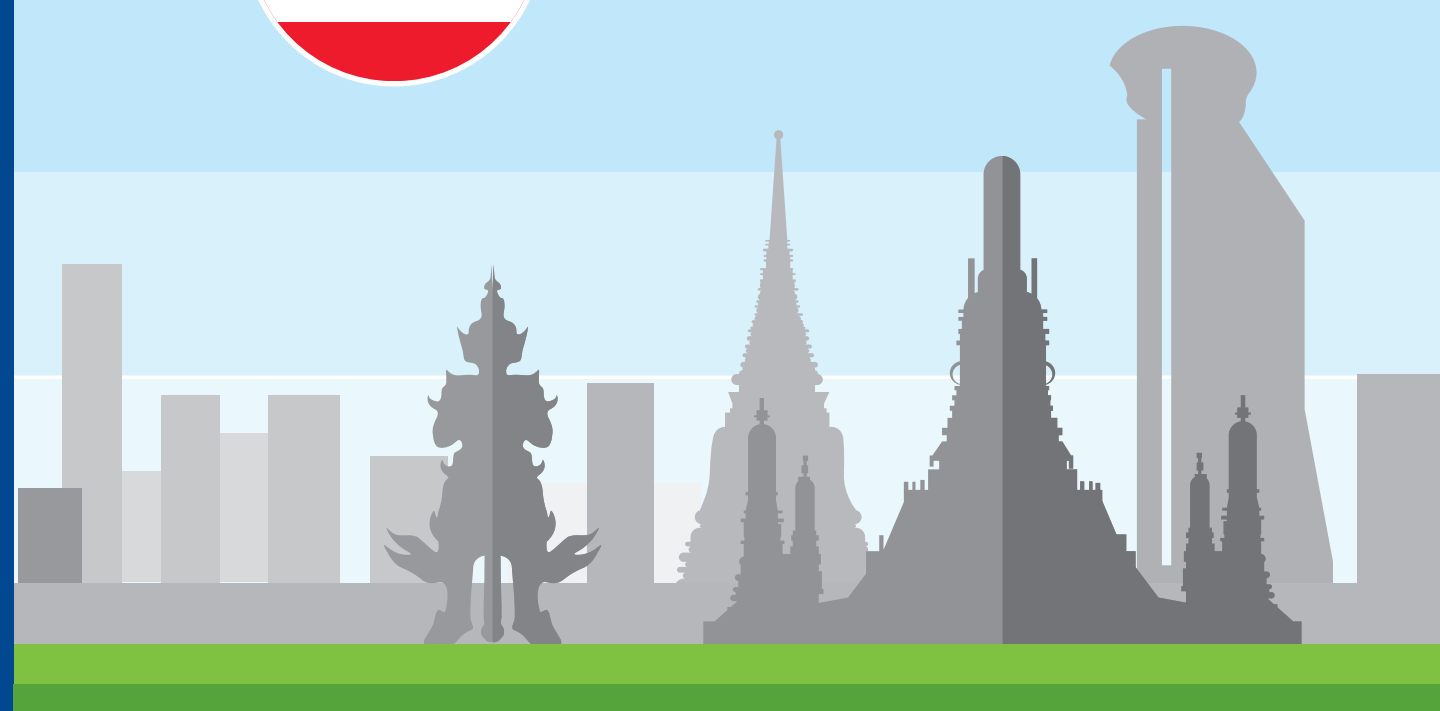
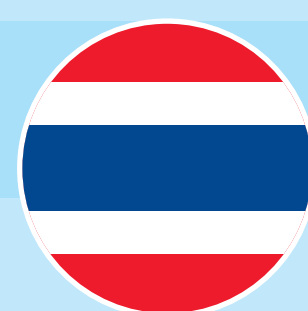


NATIONAL POLICY

2017

12th National Economic and Social Development Plan (2017-2021)

Reducing greenhouse gasses emission in energy and transportation at least 7% from business as usual



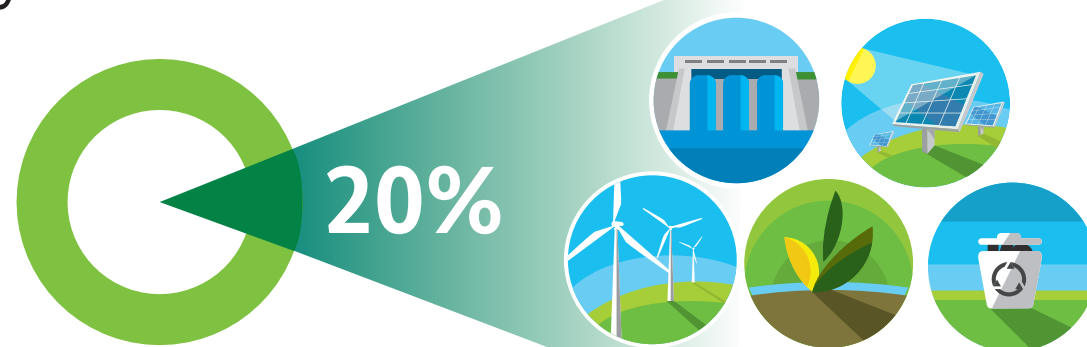
Thailand Power Development Plan 2015-2036

RE share **32.5%** (28,004 MW) in generation mix



2015 Alternative Energy Development Plan 2015

The AEDP2015 have set target of electricity from all renewable energy to achieve 20 percent of the net electrical energy demand by 2036



Thailand 20-Year Energy Efficiency Development Plan 2011-2030

Reducing final energy consumption by 20% in 2030, or about 30,000 ktoe.

*as of 2019

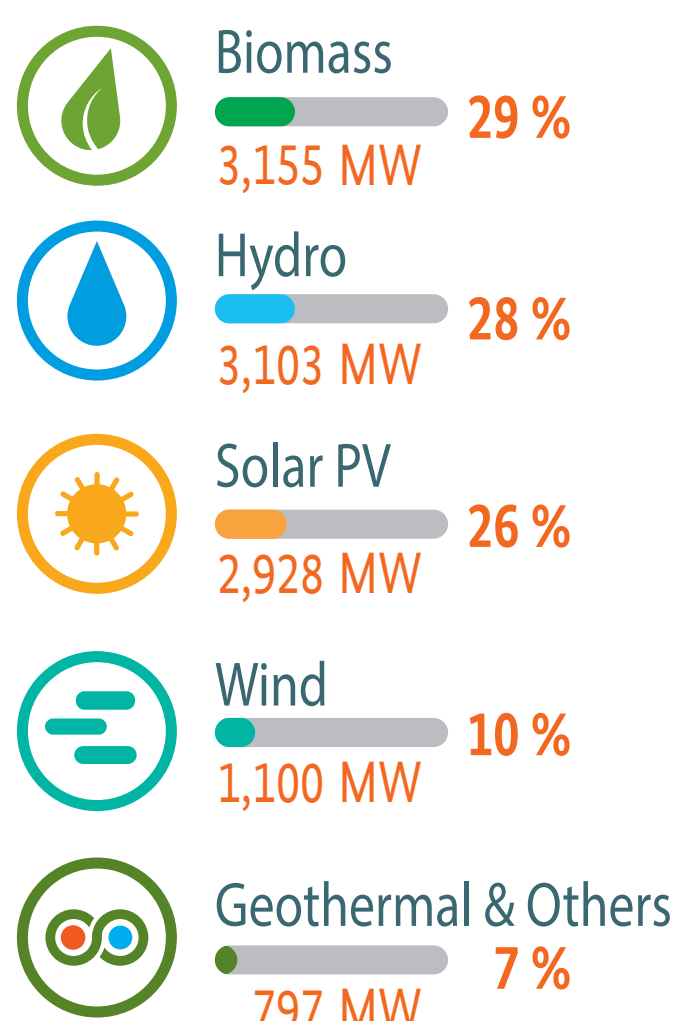
Energy Efficiency Plan 2015-2036

Reducing energy intensity by 30% by 2036 (baseline 2010)

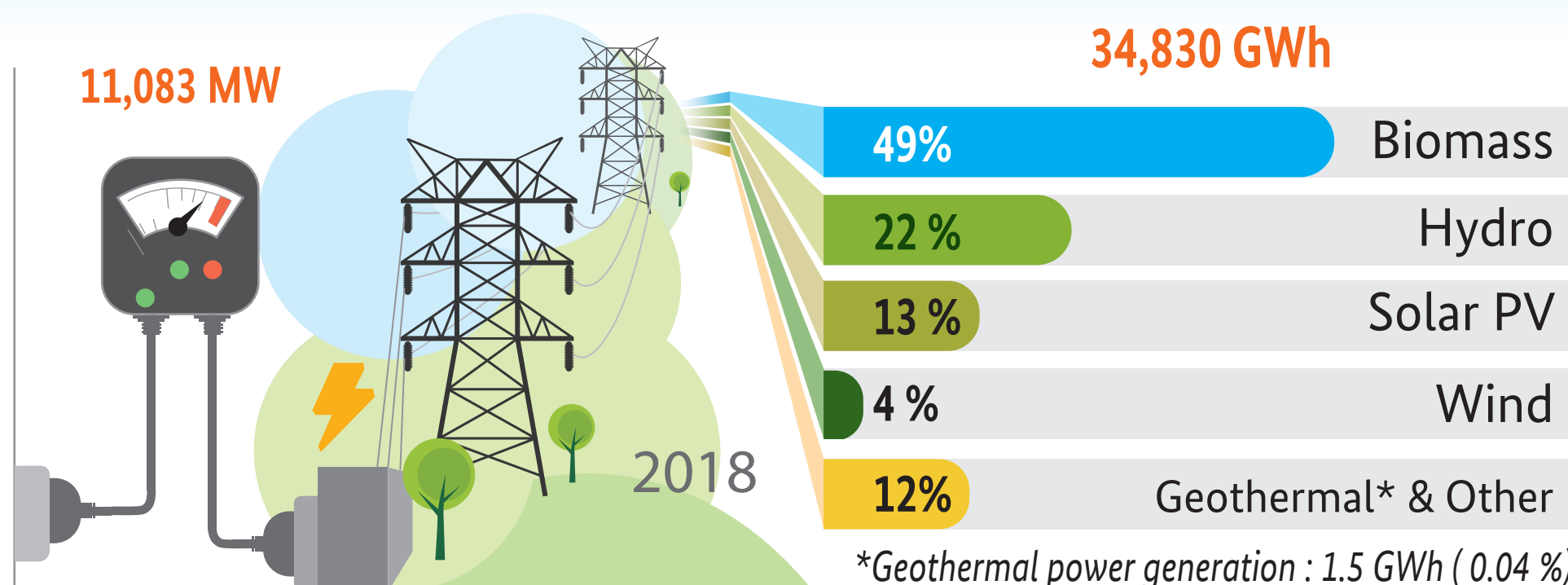
ACTIVITIES

RENEWABLE ENERGY

2017 RE Installed Capacity



2018 RE Power Generation



Promotion on Biodiesel B20 & B7

Thailand RE

Solar PV, Hydro, Geothermal, Wind, Biogas, Municipal Solid Waste

ENERGY EFFICIENCY

