

## OVERVIEW

# Brunei Darussalam



★ Bandar Seri Begawan

👤 442,400

🏠 5,765 km<sup>2</sup>

*\*as of 2019*

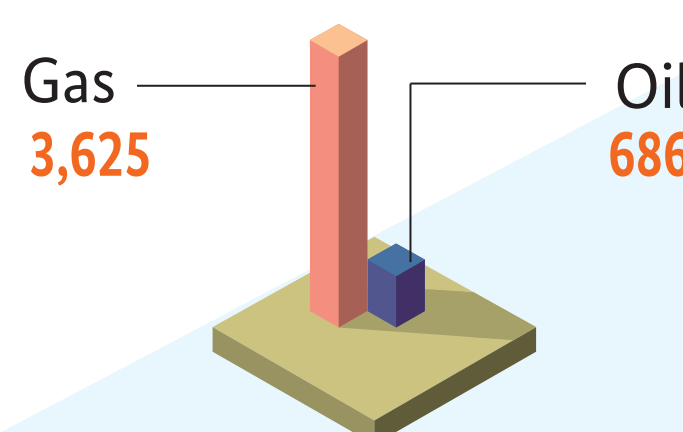
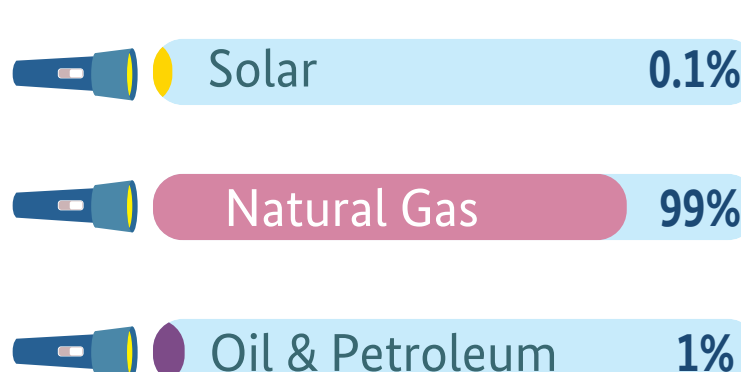
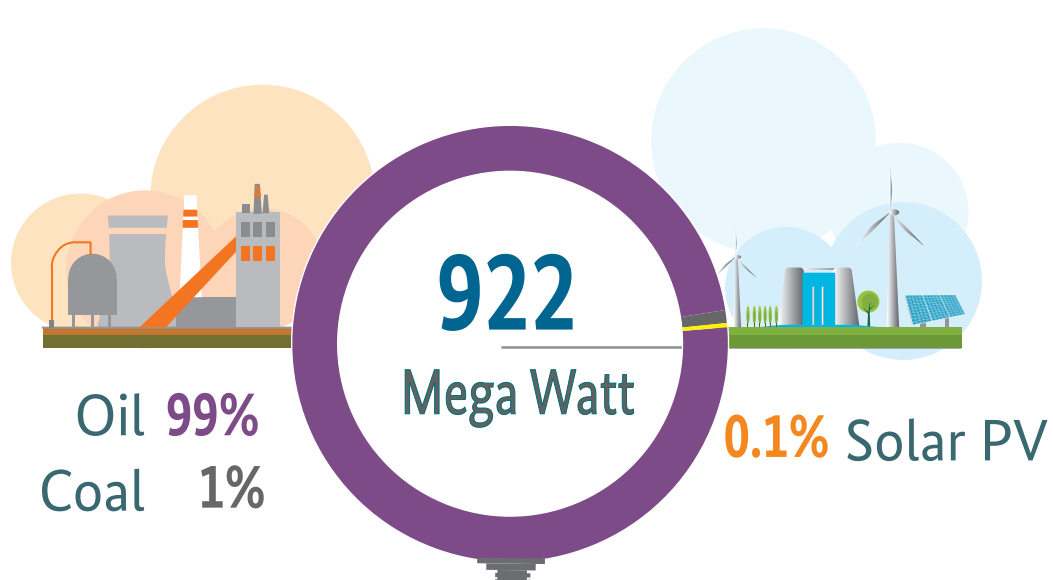
Electrification

⚡ **99.9 %**

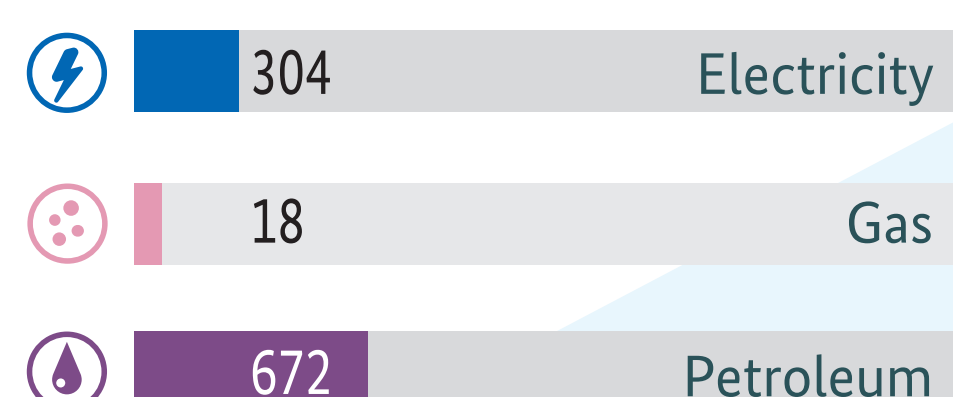
### 2017 Installed Capacity

### 2017 Power Generation

### 2017 Energy Supply



### 2017 Final Energy Consumption by Fuel (Ktoe)



Ktoe = Kilotonne of Oil Equivalent

### 2017 Fuel Consumption by Sector



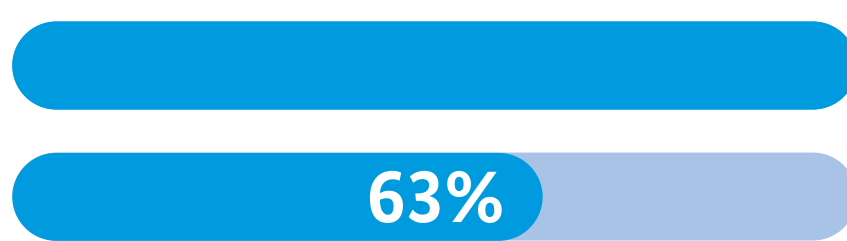
## NATIONAL POLICY



2015

### Intended Nationally Determined Contribution (INDC)

Energy Consumption in BAU Scenario

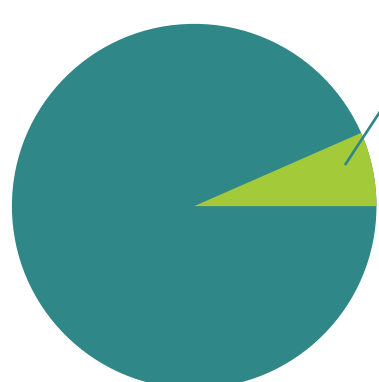


INDC target - 2035

### 2013 Energy White Paper

Target : **10%**  
**Renewable Energy**  
**954,000 Mwh**  
2013 — 2035

Total Energy Consumption



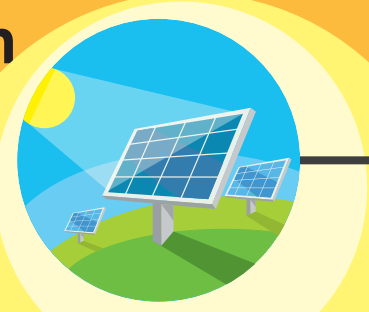
Reduce energy intensity by 45% in line with Brunei Darussalam's commitment to Asia-Pacific Economic Cooperation (APEC)

*\*as of 2019*

## ACTIVITIES

### RENEWABLE ENERGY

Total renewable energy in Brunei Darussalam is only covers 1% of total Power Generation mainly by Solar PV



Kampong Ayer 8 kW

Ripas 4.8 kW

Others

Installed on :

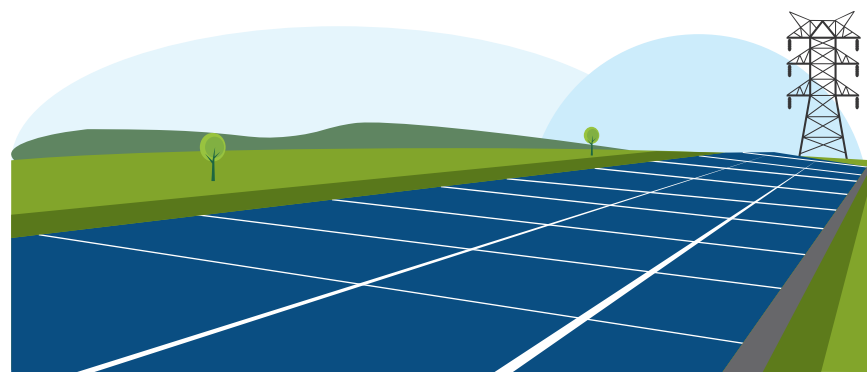
Residential

Offshore

Government Building

Remote Sites

### Solar PV Construction Plan



Reverse-Auction Mechanism

### New Solar PV

📍 Sungai Akar 30 MW

### Solar PV Park

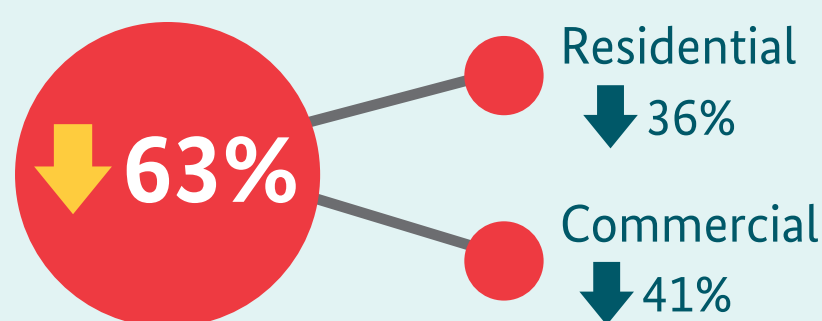
📍 Tenaga Suria 1.2 MW

### RE Installation Certificate (REIC)

Promote and provide incentive for RE Installation with rate : 1 kWp and above

### ENERGY EFFICIENCY

### Final Energy Consumption Target (2035)



### Current progress (2018) :

Energy Intensity reduced approx. 14.7% (in 2005 baseline)

### 4 Keys of Energy Efficiency

#### Power Generation Efficiency

Increase Power generation efficiency 23% to 45%

#### Transportation

Reduce 13% energy consumption from BAU scenario

#### Strengthening Policies

Labelling, Regulation on Building, Fuel, Incentives

#### Residential & Commercial Building

Smart tariff, reduce 36% consumption from BAU

### ENERGY LABEL

The more stars the more efficient



Efficiency Level

Annual Energy Consumption

kWh B\$

AC Model

Electricity Consumption

Standard Labeling for AC